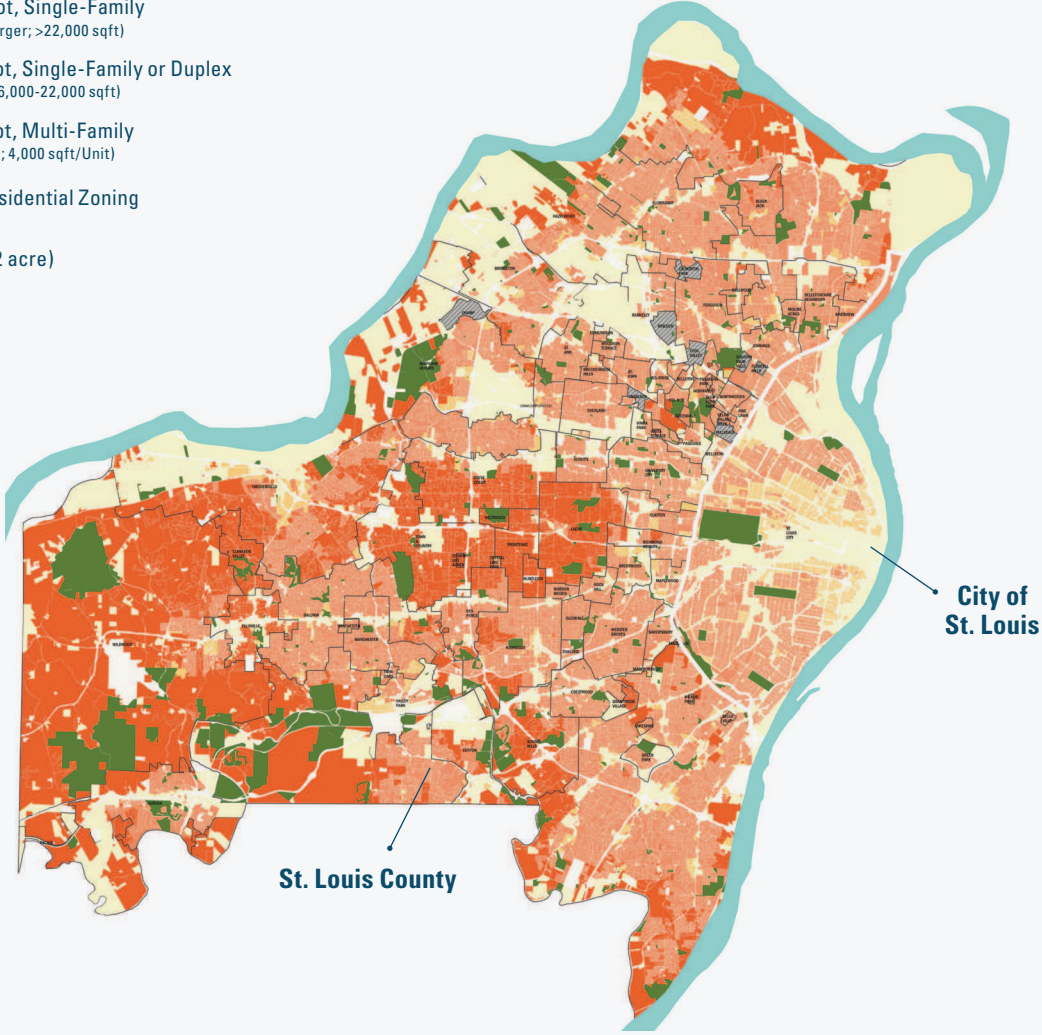


Figure 12. County equivalent zoning in the City of St. Louis and St. Louis County.

- Large Lot, Single-Family (R1A or Larger; >22,000 sqft)
- Small Lot, Single-Family or Duplex (R2 to R5; 6,000-22,000 sqft)
- Small Lot, Multi-Family (R6A to R8; 4,000 sqft/Unit)
- Non-Residential Zoning
- Park (>2 acre)



Source: Missouri Wank 2017